



# Let's Go to New Zealand

## 3 Weeks- South Island

### February 2013



Lodging in B&Bs, Hotels, Lodges, Motels  
 Several 2-Night Stays – Breakfast & Dinner Daily  
 Spacious Motor Coach & Guide  
 Winery Visit – Gondola Ride  
 Milford Sound Cruise – Farm Stay  
 Whale Watching & Other Eco-Tours  
 Scenic Fjordlands – Franz Joseph & Fox Glaciers  
 Mountains – Rivers – Nature – Culture – Adventure  
 Optional  
 Golfing Opportunities – Kayaking – Shotover Jet Boat  
 Glacier Flyovers/Bungy Jumping



Larger version on last page

**Day 1 Arrive Christchurch**, met by **Malcolm** of **Brilliant Tours of New Zealand**, greet and transfer to hotel by coach. Including as much city touring as time, energy, and conditions allow.

**Accommodation: TBD - L, D**

**Day 2 CHRISTCHURCH to KAIKOURA**

North from Christchurch (~3 hours) following the Pacific coastal highway to the township of **Kaikoura** – nestled beneath snow capped mountains and offshore a deep ocean trench.



The seaside settlement of Kaikoura, situated midway between Christchurch and Picton on the rugged east coast of New Zealand's South Island, is overlooked by majestic mountains, which are snow-capped for many months of the year. This unique combination of ocean and mountains offers stunning coastal alpine scenery and a host of eco-tourism oriented activities, including Whale watching, Dolphin swimming, walks, and much more!

Whether you enjoy just soaking up the surrounding beauty, walking the shores or more active pursuits, there's plenty to see and do in Kaikoura on land, by sea, or in the air! For those who enjoy walking, the Kaikoura area offers walks for all tastes and levels of fitness, ranging from thirty minutes duration, to half and full day tracks and more energetic tramps and climbs

Optional afternoon activities include: Golf, Maori Cultural Experience, walks around Kaikoura, including seal colony viewing

**Accommodation: Blue Seas Motel - B, D**

**Day 3 KAIKOURA**

A full day for **whale watching** (tour included), alternative eco-marine activities, walking or relaxation.



**Kaikoura** is World renowned for an abundance of whales and numerous other sealife, including NZ Fur Seals, dolphins, penguins and other sea birds. All activities are provided by highly professional locally based eco-marine operators permitted by the NZ Government Department of Conservation.



Every **Whale Watch Tour** is a unique experience and the sightings vary. Giant Sperm Whales are the stars of the show and year-round residents. A typical Whale Watch Tour may encounter New Zealand Fur Seals, pods of Dusky dolphins and the endangered Wandering Albatross.



**Accommodation: Blue Seas Motel - B, D**

## Day 4 KAIKOURA to BLENHEIM

This morning (only if required) a second opportunity for Whale Watching or other eco-marine activities, then it's just two hours drive north to Blenheim, where we will **visit a local winery** or two.

Recognized internationally for its distinctive, herbaceous Sauvignon Blanc, **Marlborough is New Zealand's largest winemaking region**, with about 65 wineries and 290 grape growers and over 4,000 hectares planted in grapes, mainly Sauvignon Blanc, Pinot Noir, Chardonnay, Riesling, Pinot Gris and Gewurztraminer. Marlborough is also establishing a strong reputation for its methode traditionnelle wines.

**Accommodation: Brydan on Rose or Waterfront Motel - B, D**



## Day 5 BLENHEIM to MOTUEKA

A very scenic drive from Blenheim to Motueka via Havelock and **Nelson City**.

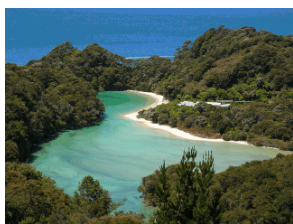
Motueka township is situated on the western side of Tasman Bay adjacent to Abel Tasman National Park. Nelson city to the east of Tasman Bay is one of the largest and fastest growing cities in the South Island. Tasman Bay region is renowned for sunshine, a moderate climate ideal for horticulture, such as apples, pip-fruit, stone-fruit, hops, and vineyards. Also arts and cultural activities.

Plenty of time for sights and activities en route and possibly a late afternoon visit to the Motueka Sand Spit

**Accommodation: Nautilus Lodge - B, D**

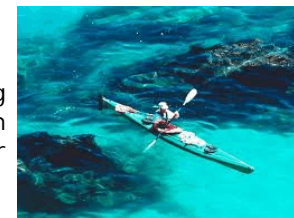
## Day 6 MOTUEKA - ABEL TASMAN NATIONAL PARK

A full day for your choice of optional activities. For example: sea kayaking (guided or self-guided) along or around the beautiful shoreline of the Abel Tasman National Park; freedom walking on the Abel Tasman Track (maybe combined with cruising) or cruising.



The strip of coast that falls within the boundaries of the park is highly distinctive. Granite and marble formations fringe the headlands, which are cloaked in regenerating native forest. Inviting sandy beaches fill the spaces between trees and tide line. Crystal clear streams tumble down mossy valleys to join the ocean.

Native wildlife is an essential part of the scenery. Tui and bellbird song fills the forest; shags (cormorants), gannets and little blue penguins dive for their dinner; fur seals lounge on the rocks around the edge of Tonga Island



Alternatively, we cross Takaka Hill to Golden Bay and Collingwood for a safari to Farewell Spit, internationally renowned for the enormous variety of sea and wading birds.

**Accommodation: Nautilus Lodge - B, D**

## Day 7 MOTUEKA to PUNAKAIKI

Approximately 4-5 hours traveling from Motueka, southwest via Westport at the mouth of the mighty **Buller River** and south on the spectacular coastal highway to Punakaiki.

Plenty of attractions en route with time for short walks and photo opportunities. Ideally plenty of time for some longer walks once we reach our destination. Rainforest, bush walks, beach walks, river kayaking – fascinating **"pancake rock" formations** at Punakaiki – remote beaches – bird watching – coastal rainforest – sunset over the sea.



**Accommodation: TBD - B, D**

## Day 8 PUNAKAIKI

Punakaiki full day. Fascinating "pancake rock" formations at Punakaiki – remote beaches for walks – bird watching – coastal rainforest – sunset over the sea.



**Punakaiki** is best known for its **Pancake Rocks** and **Blowholes** – both of which are spectacular and a must-see when visiting the West Coast of New Zealand. TripAdvisor review, Pancake Rocks: "What an amazing place to see. Nature at its best. Wonderfully planned pathways ever so easy to walk for those who are not too energetic. Wouldn't miss it for anything - can't believe it didn't have a charge to go in."

Optional activities: River kayaking, river valley or beach walks, cave expeditions, horse riding.

**Accommodation: TBD - B, D**

## Day 9 PUNAKAIKI to WHATAROA near FRANZ JOSEF GLACIER

South to **Hokitika** where we may catch a first glimpse of some of the higher mountains of the Southern Alps and the rainforest of Westland World Heritage National Park. On to Whataroa near **Franz Josef Glacier** for our overnight stay. Opportunities for short walks, photo stops and Hokitika Arts and Crafts along the way.



First stop this morning will be at **"Shantytown"** near Greymouth, a re-creation of an historic West Coast township of the late 1800's focused on gold-mining, sawmilling, local history and living conditions for early settlers of this region.



**Home Hosted Dinner**

**Accommodation: Mt. Adam Lodge - B, D**

## Day 10 WHATAROA to FRANZ JOSEF and FOX GLACIERS

A full day of scenic touring amongst the glaciers, high mountains, wild coastline, rainforest, wetlands, lakes and unique birdlife of South Westland.



A visit to the **White Heron Sanctuary** is included. Optional are alpine & glacier walks, scenic helicopter & plane flights over the high mountains and glaciers near and surrounding awesome peaks and glaciers of Mount Cook, Franz Josef and Fox Glaciers.

Weather permitting, the **White Heron Sanctuary** tour is the first priority for today, followed by a scenic helicopter flight from Franz Josef to Fox village (optional). This leaves the afternoon free for walks (Fox Glacier and Lake Matheson). After dark we may go for another walk in the forest to see glow worms!



**Accommodation: High Peaks Hotel - B, D**

## Day 11 FOX GLACIER to WANAKA via HAAST PASS

Today we contrast the snow capped mountains, glaciers, rainforest and wild coastline of South Westland with the stark and colorful rocky landscapes of **Central Otago** as we cross the Southern Alps at Haast Pass to **Lake Wanaka**.

An early start is essential to enable ample opportunities for the multitude of short walks and photo stops enroute: Bruce Bay, Lake Paringa, Knights Point, Ship Creek, Haast Beach, Haast River, Gates of Haast, Lakes Wanaka & Hawea.



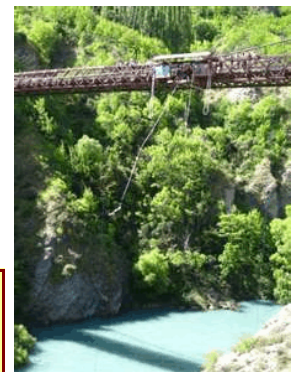
**Home Hosted Dinner**

**Accommodation: Various B&B's - B, D**

## Day 12 WANAKA TO QUEENSTOWN

From Wanaka to Queenstown it may be just two hours drive via the **fruit lands of Cromwell** and the **Kawarau River Gorge** but usually takes most of the day; so many sights and attractions, mountains, lakes, rivers, **Stuart Landsborough's Puzzling World**, **Wanaka Warbirds Fighter aircraft museum**; the massive **Clyde Dam** hydro electric scheme; Old Cromwell township, historic gold mining sites, orchards, vineyards, wineries and the historic **Kawarau Bridge** to view (or experience) the bungy jump.

Some very special surprises en route today as we take a leisurely "off-the-beaten-track" drive via the upper Clutha Valley, historic townships of Clyde, Alexandra, Old Cromwell and Bannockburn, and the Kawarau River valley, a region once renowned for gold mining and fruit growing, today renowned for producing some of the world's finest Pinot Noir wines.



**Home Hosted Dinner**

**Accommodation: Peppers Beacon - B, D**

We will visit A. J. Hackett Bungy (**the original world famous bungy operators**) at the historic Kawarau River bridge near Queenstown; jumping is optional. Queenstown: "Adventure Capital of the World."

Go, Steve!

## Day 13 QUEENSTOWN – ARROWTOWN ACTIVITIES

You may wish to sample some of the abundant range of leisure or adventure activities available in and around Queenstown, "**Adventure Capital of the World.**" For the adventurous there is jet boating, white water rafting, luge, hang gliding, sky diving, para-sailing, bush walking – there will be time for one or two of these activities this morning, but there is much more to Queenstown beyond pure adventure.



A visit to Arrowtown historic gold mining township, lunch at the Skyline Gondola overlooking Queenstown followed by **a relaxing cruise across Lake Wakatipu on the vintage steamship "TSS Earnslaw" to Walter Peak farm** is included for this afternoon.



Included today: **Queenstown Skyline Gondola, Earnslaw Walter Peak Farm Tour**



Relive the elegance of turn-of-the-century travel with a cruise from Queenstown aboard the vintage steamship TSS Earnslaw, the only coal fired passenger carrying vessel still operating in the southern hemisphere. What better way to view the magnificent scenery than by taking a cruise aboard the TSS Earnslaw. Walter Peak High Country Farm, on the western shores of beautiful Lake Wakatipu, provides visitors with the opportunity to relax and experience New Zealand high country life.

**Accommodation: Peppers Beacon - B, D**

## Day 14 QUEENSTOWN to TE ANAU via LAKE MANAPOURI

This morning we continue south to the most beautiful of all the Southern Lakes, **Manapouri**, then to Te Anau township on the edge of **Fiordland World Heritage National Park**. Another major transition of scenery and climate from the barren rocky landscapes of the Central Otago/Queenstown/Southern Lakes region to the rain forested high mountains and beautiful lakes and fiords of Fiordland.



Optional Kingston Flyer historic steam train from Kingston to Fairlight en route. Opportunities for golf, walks, kayaking, shopping, relaxation, a visit to the Te Anau Wildlife Centre or the Te Anau Glow Worm Caves (this afternoon or evening). Te Anau: "The Walking Capital of the World."

**Te Anau Glow Worm Caves** – an underground network of limestone caves lit by thousands of glowworms. In the darkness they produce a glittering display. Carved out by the force of the river, the underground world is surprisingly beautiful with whirlpools and roaring waterfalls. Begin with a scenic cruise across Lake Te Anau and then nature guides take you through the caves in small groups



**Accommodation: Radford's Lakeview Motel - B, D**

## Day 15 MILFORD SOUND DAY EXCURSION AND NATURE CRUISE

Truly some of the most beautiful scenery in the world as we venture into the World Heritage **Fiordland National Park** for a **day tour to Milford Sound** (return to Te Anau late afternoon).



Remarkable scenery on the drive from Te Anau via the **Eglinton and Hollyford Valleys**, the Homer Tunnel, and **Cleddau Valley to Milford Sound**, the northern-most and only fiord in Fiordland accessible by road – the drive only surpassed by the 2 ½ hour **scenic cruise** in a comfortable vessel on the fiord surrounded by some of the steepest and highest sea-cliffs you will see anywhere.

An extended and leisurely cruise of the Milford Sound to the Tasman Sea. Nature cruises have a relaxed and flexible itinerary that allows plenty of time to enjoy the scenery and wildlife and have special appeal for the independent traveler. An on-board nature guide provides detailed interpretation with a roving microphone. View the spectacular alpine scenery including waterfalls, rainforest and the towering peaks; and keep a lookout for wildlife including seals, dolphins and penguins when in season.

**Accommodation: Radford's Lakeview Motel - B, D**

## Day 16 TE ANAU to DUNEDIN and OTAGO PENINSULA

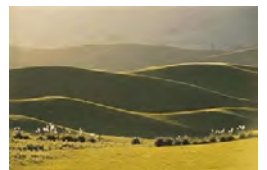
Reluctantly we leave the Fiordland, Queenstown, and Southern Lakes Districts, but there is much more to see.

Across the rolling and incredibly beautiful green hills of **Southland and coastal Otago** to "**Edinburgh of the South,**" Dunedin, second city of the South Island, which is famous for its Scottish roots, Gothic architecture and thriving eco wildlife activities.



We'll save the Peninsula for tomorrow afternoon, but there will be time today for some shopping or gallery-hopping in town, or an optional visit to the Royal Albatross Colony at Taiaroa Head.

**Accommodation: Amross Motel - B, D**



## Day 17 DUNEDIN ACTIVITIES

A full day for sightseeing, **Larnach Castle**, **Yellow-eyed Penguin Colony**, Olveston, Otago Museum, Dunedin City Art Gallery, Otago Settlers Museum, Cadburys Chocolate Factory, Dunedin Botanic Gardens, etc, or an afternoon excursion on the Taieri Gorge Scenic Railway.

Included Activities: **Yellow Eyed Penguin Colony & Lanarch Castle**



There are 18 different species of penguin in the world and all of these live in the Southern Hemisphere. The world's rarest is the yellow-eyed penguin. They get their name from the adult's yellow eye and yellow stripe of feathers around their head. Yellow-eyed penguins are also called 'Hoiho', their Maori name, which sounds like one of the calls of the adult. Hoiho are very special to Otago Museum because, although they live on small islands south of New Zealand, the largest mainland colony of this wonderful bird is on Otago Peninsula, just a few miles from Dunedin City.

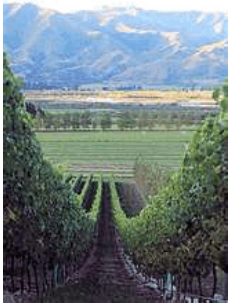
With its exciting, sometimes scandalous and tragic history, magnificent carved ceilings, New Zealand antiques and breathtaking views, **Larnach Castle** offers you a vision of the past and present. Today, the Castle is the home of the Barker family, who have spent over forty years lovingly restoring the building and recreating the beauty of the 14 hectares of gardens and grounds.



**Accommodation: Amross Motel - B, D**

## Day 18 DUNEDIN to TWIZEL via MOERAKI BOULDERS and OAMARU

North from Dunedin along the eastern coastline to the historic township of Oamaru via the "Moeraki Boulders." From Oamaru we turn inland again toward the mountains of the **Waitaki Valley** to Twizel for one night's home stay near Mount Cook on the eastern side of the Southern Alps.



Breathtaking alpine scenery forms a backdrop to the milky blue glacial lakes of the Mackenzie Country. Along the way we will visit the famous **Moeraki Boulders** on the beach at Moeraki between Dunedin and Oamaru, and Waitaki Valley.

The **Moeraki Boulders** are huge spherical stones that are scattered over the sandy beaches, but they are not like ordinary round boulders that have been shaped by rivers and pounding seas. These boulders are classed as septarian concretions, and were formed in ancient sea floor sediments. They were created by a process similar to the formation of oyster pearls, where layers of material cover a central nucleus or core. For the oyster, this core is an irritating grain of sand. For the boulders, it was a fossil shell, bone fragment, or piece of wood. Lime minerals in the sea accumulated on the core over time, and the concretion grew into perfectly spherical shapes up to three metres in diameter



Final opportunity for **Golf** is a possibility this afternoon or tomorrow afternoon.

**Home Hosted Dinner**  
**Accommodation: Heartland Lodge - B, D**



## Day 19 TWIZEL to MOUNT COOK NATIONAL PARK

From our Mackenzie Country lodge, a full day excursion to Mount Cook National Park: walking/trekking – scenic helicopter flights – sightseeing or relaxation. Return to Twizel late afternoon.

Walking/trekking opportunities in **Mt. Cook National Park** are always subject to available time and weather conditions. However, whatever the weather conditions, a visit to the **Sir Edmund Hillary Alpine Centre** at the **Hermitage Hotel** within Aoraki Mount Cook is a must.



Sir Edmund Hillary became one of the world's most famous explorers, but his mountaineering days began on the slopes of Aoraki Mount Cook in New Zealand - and now visitors to the area can share the passage of his long and brilliant career. Since opening in 2008, a purpose-built entertainment and education centre with a planetarium, museum, stargazing deck and Hillary Gallery has become a key destination for visitors to the



There's a range of walks from **Mt. Cook Village** to suit all abilities, and for the less able some alternative activities. We will do our best to satisfy all abilities and for the golfer a final opportunity to take a day out if that has not been possible elsewhere, or if another opportunity is desired.

**Home Hosted Dinner**  
**Accommodation: Heartland Lodge - B, D**

## Day 20 TWIZEL to STAVELEY



Direct from Twizel to **Lake Tekapo**, then **Fairlie**, Geraldine on the edge of the Canterbury plains an intensively farmed patchwork of fields and sheep-covered rolling green hills of **South Canterbury** to Staveley at the foot of Mount Somers for the final night before departure.

Visit the **Church of the Good Shepherd** at Lake Tekapo; take time out for a short but spectacular walk up the slopes of Mount John overlooking the turquoise blue glacial lake. Our guide Malcolm's home town, Geraldine, has some interesting attractions to visit this afternoon before we continue to Staveley.

Ideally we arrive mid-afternoon as our hosts are always keen to show visitors around the farm or show a variety of local farming activities.



### Home Hosted Dinner

**Accommodation: Birchlands Farm Stay or equivalent - B, D**

## Day 21 STAVELEY to CHRISTCHURCH

Return to Christchurch via **Rakaia Gorge** direct to Christchurch International airport for departure or to your Christchurch accommodation if spending another night (optional). Two hours' scenic drive from the foothills and across the **Canterbury Plains** with scenic surprises along the way. An opportunity to visit Willowbank Wildlife Reserve or the International Antarctic Centre near Christchurch airport if time allows. Transfer to airport and fond farewells included.



## CHRISTCHURCH to CHRISTCHURCH via Kaikoura, Motueka, Punakaiki, Whataroa, Fox Glacier, Wanaka Queenstown, Te Anau, Dunedin Twizel, Staveley





# Let's Go to New Zealand

## February 2013



**The Cost of this 21-Day Tour is \$7,800\* per person, double occupancy**

- Travel Insurance is highly recommended, and supplied by Drifter Sister

### **Payment Schedule:**

**(Make checks out to DRIFTER SISTER)**

**Deposit: \$2,000 per person is due June 1, 2012 or upon sign-up**

**Balance: Due November 15, 2012** (a separate invoice will be sent for this payment)

### **The Tour Includes:**

- All lodging as stipulated in the Itinerary
- Breakfast & Dinner Daily
- Transportation in 15-Passenger Motor Coach
- Malcolm, our extra-special Naturalist Guide
- Entrance fees to sites and attractions listed as included in the itinerary
- Transfers to/from Airport
- Catch The Wind cap and luggage strap

### **Activities Included:**

- Winery Visit & Tasting
- Willowbank Wildlife Reserve
- Whale Watch Kaikoura
- Shantytown, Greymouth (incl train ride)
- White Heron Sanctuary Tour
- Queenstown Skyline Gondola
- Earnslaw Steamship  
& Walter Peak Farm Tour
- Milford Sound Nature Cruise
- Farm Stay
- Tons of FREE activities. Even if you choose not to do the optionals, there will be plenty to do. Most days are spent enjoying nature and the unprecedented beauty of New Zealand – **that's why we're here!**
- Daily Scenic Drives
- Walks - Beach, Rainforest, Mountain
- Photo Opportunities
- Visit to Pancake Rocks, Moureki Boulders, etc.
- Old Cromwell township
- Historic gold mining sites - and more

### **Extras, and Excluded**

- Airfare to/from Christchurch
- Optional Activities, including
  - Golf (3-4 opportunities)
  - Kayaking (several opportunities)
  - Glacier Flyovers (several opportunities)
  - Bungy Jumping
  - Shotover Jet Boat
  - Glow Worm Caves
  - Horse Riding
- Lunches
- Alcoholic Beverages
- Laundry
- Any personal expenses (e.g. telephone calls, between meal snacks, etc.)
- Travel Insurance (highly recommended)

### **Ground Operator**

Brilliant Tours of New Zealand  
Malcolm Latta

**CONTACT: Ihla Crowley (a.k.a. Drifter Sister) - 702-294-4365 - [ihla@cox.net](mailto:ihla@cox.net)**

\*Based on NZ\$.80. If rate increases, the price may have to be increased.